

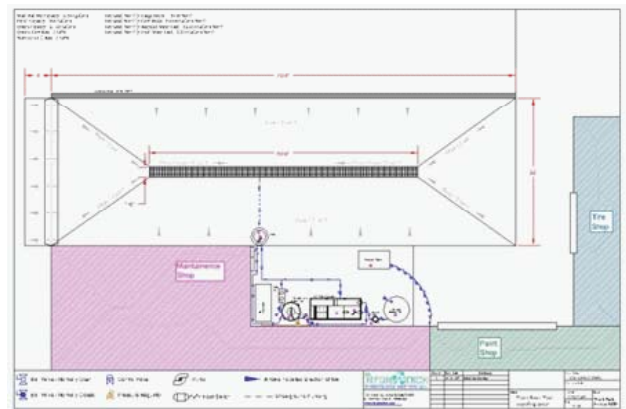


US Hydro Tech Environmental Solutions offers a variety of approaches to capture wash water. Whether clients are looking for a temporary, portable, or permanent system, US Hydro Tech Environmental Solutions has the products and knowledge to address the need.

Proper design of a wash pad can increase the efficiency of your job site and reduce your liability. A well designed wash pad can aid in removed solids from your waste stream, increase treatment performance, reduce overall maintenance, and prevent all liquids from leaving.



US HydroTech is a single source provider for all wash pad needs. We design, build, and supply all components for wash pads.



US HydroTech Environmental Solutions

1007 W. College Ave. # 461
 Santa Rosa, CA 95401
 Phone 707-793-4800, Fax 888-473-3650
www.ushydrotech.com, Info@ushydrotech.com

The Porta-Mat Portable Wash Pad Offers a Cost Effective Alternative to Fixed Wash Pads. Wash Your Vehicles, Equipment and/or Parts Then Pack it Away for Later Use. Works on Concrete, Sand, and/or Asphalt.



Features:

- Economical
- Portable
- Lightweight
- Compact Storage
- Easy Set-Up
- No Inflation
- On-Site Repair Kit
- Welded Seams

Porta-Mat Package Includes:

- 12' x 22' Porta-Mat Containment Mat
- High Capacity Submersible Pump
- One Pair of Aluminum Diamond-Plated Ramps
- Discharge Hose
- Padding to Protect the Mat
- Safety Matting for Non-Slip Walk Surface
- Rip, Tear and Hole Repair Kit

Available Options and Accessories:

- Additional Set of Ramps
- Available in Custom Sizes
- Available in Custom Shapes
- Available with Custom Stenciling
- Heavy Duty 20,000LBS Capacity Ramps
- Multiple Color Options
- Portable Oil Water Separator
- Portable Filtration Cart
- Additional Safety Matting
- Canopy
- Spill Control Kits and Containment Berms



US HydroTech Environmental Solutions

1007 W. College Ave. # 461

Santa Rosa, CA 95401

Phone 707-793-4800, Fax 888-473-3650

www.ushydrotech.com, Info@ushydrotech.com



The CAMEL is a modular system constructed of fiberglass. Due to the strength and flexibility of the fiberglass composite materials, the CAMEL may be installed on a variety of solid substrates and applications. The CAMEL system can accommodate a variety of fleet vehicles and can be disassembled and moved to alternate locations should the need arise.

Each CAMEL system is manufactured from heavy duty, 1" thick, fiberglass composite materials.

The CAMEL system is shipped as a series of 20' long pans, which have slip fit jointures. This flexible design means that a system of variable length (generally 40' to 100' long) can be easily installed by simply increasing the number of pans.

Installation is fast and easy:

- Half of the sections are slip fit end-to-end to create one-half of the CAMEL system.
- The two mirror image halves are positioned side-by-side and joined together with heavy-duty nuts and bolts.
- Steel ramp set(s) [one end for back-in, both ends for drive-through] is/are sited and the system is secured to the substrate via steel hold-downs.

Note: Sectional joints and the center wall joint are sealed with neoprene gasket, caulk sealant, or fiberglass bonding as is appropriate.



Camel systems are often custom designed to meet special requirements as shown in the pictures above. Special filter drain systems, are available to pull out hydro-carbons while allowing removal of rainwater from the CAMEL system.

Limited site preparation, no excavation, fast, clean installation, immediate use, non-porous design, superior chemical resistance and portability are only some of the many CAMEL advantages.

US HydroTech Environmental Solutions

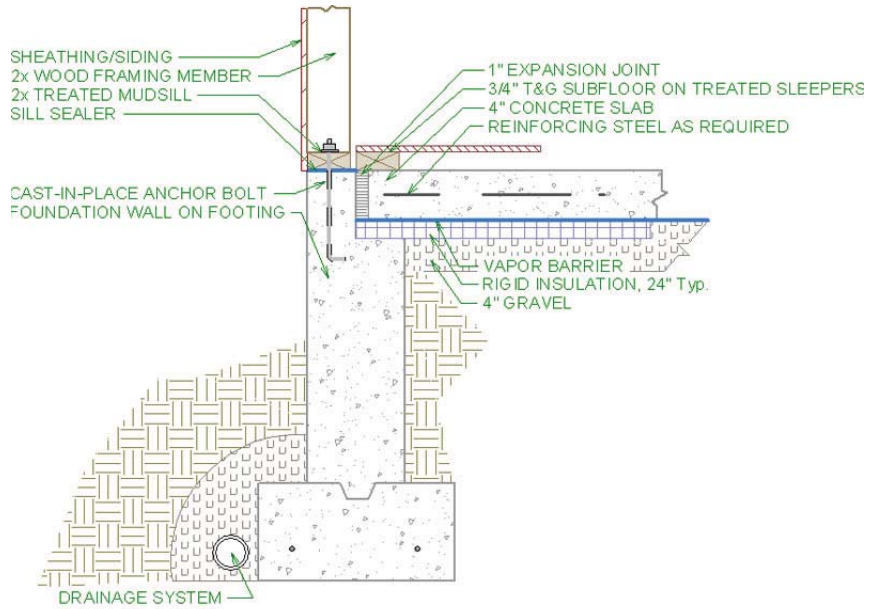
1007 W. College Ave. # 461

Santa Rosa, CA 95401

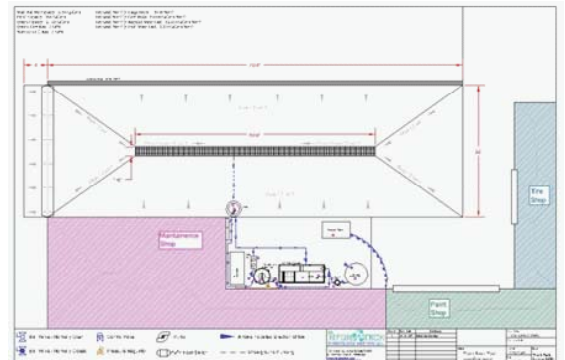
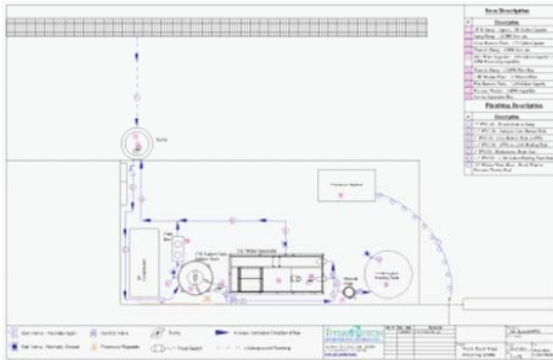
Phone 707-793-4800, Fax 888-473-3650

www.ushydrotech.com, Info@ushydrotech.com

Storm Drain Protection



Concrete Slab on Grade
 (print at 1"=1')



US HydroTech Environmental Solutions

1007 W. College Ave. # 461
 Santa Rosa, CA 95401
 Phone 707-793-4800, Fax 888-473-3650
www.ushydrotech.com, Info@ushydrotech.com