



PARTS LIST FOR
MH-0015_0030-IM10

This Parts Listing has been compiled for your benefit. You can be assured your Mi-T-M Space Heater was constructed and designed with quality and performance in mind. Each component has been rigorously tested to insure the highest level of acceptance.

The contents of this Parts Listing are based on the latest product information available at the time of publication. Mi-T-M reserves the right to make changes in price, color, materials, equipment, specifications or models at any time without notice.

WARNING

THIS IS A PROFESSIONAL SPACE HEATER. CAUTION SHOULD BE OBSERVED WHEN USING OR REPAIRING THIS UNIT! READ AND FOLLOW THE SAFETY WARNINGS LISTED BELOW BEFORE ATTEMPTING ANY REPAIRS ON THIS SPACE HEATER!

SAFETY WARNINGS

1. NEVER alter or modify the equipment. Use only genuine Mi-T-M parts for repair of your space heater. Failure to do so can cause hazardous operating conditions and will VOID warranty.
2. Be thoroughly familiar with controls.
3. Before servicing the unit, turn unit off, and allow the unit to cool down. Do not make repairs while the unit is running. Service in a clean, dry, flat area. Be especially careful to properly dispose of any flammable materials.

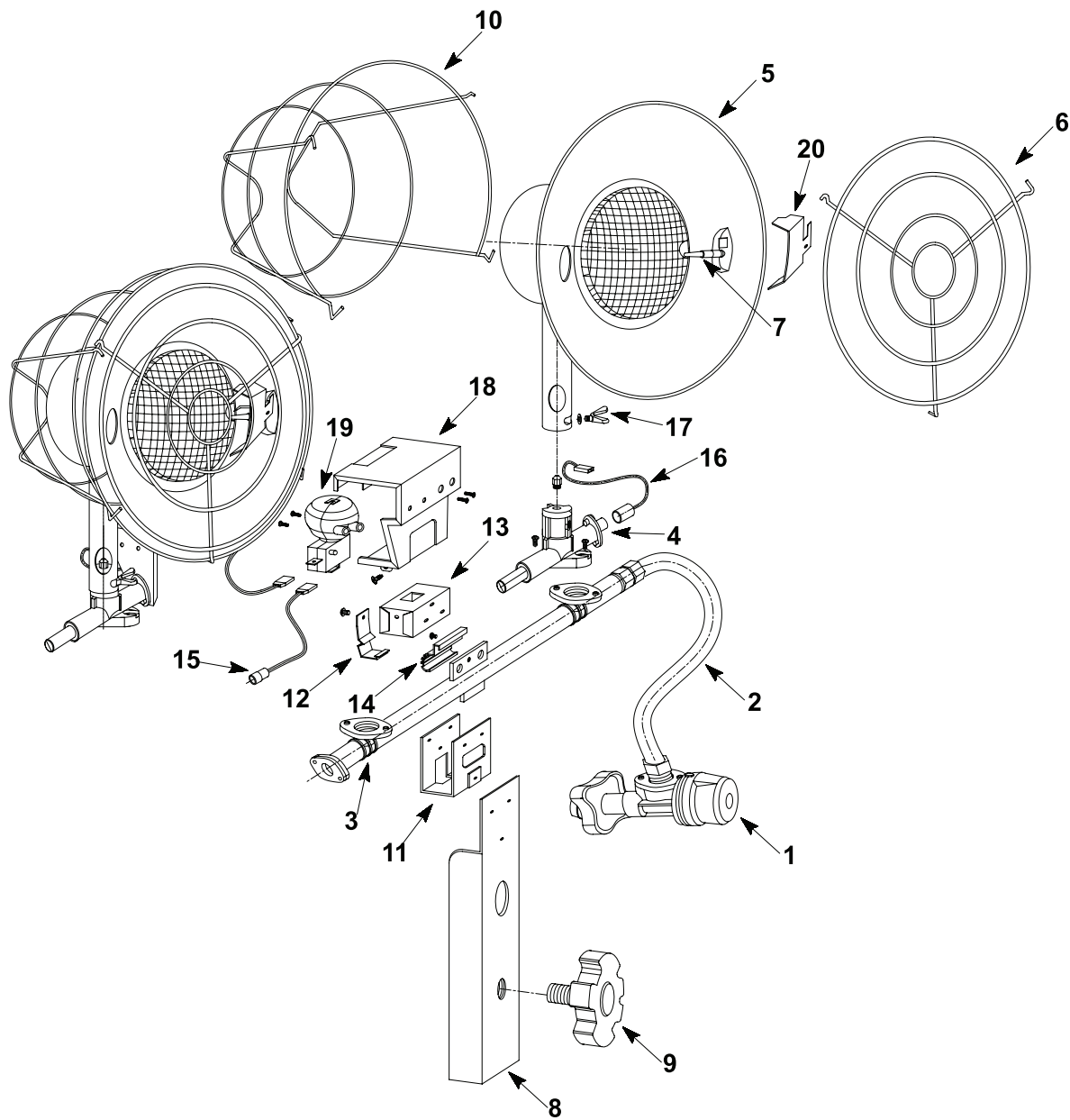
Table of Contents

SPECIFICATIONS.....	3
FRAME ASSEMBLY	4

SPECIFICATIONS

Model	MH-0015-IM10	MH-0030-IM10
Rating BTU/Hr	16,000	32,000
Operating time 20 lb LP cylinder	27 hrs. on high	14 hrs. on high
Ignition	Match	Match
Size (L x W x H)	8.4" x 7.4" x 12.0"	17.5" x 5.5" x 12.0"
Net Weight (Lbs)	2.2	5

FRAME ASSEMBLY



MH-0015_0030-IM10 02:1014 RSW

FRAME ASSEMBLY

ITEM NO.	ITEM DESCRIPTION	PART NO.
1	REGULATOR ASSEMBLY (15K)	68-6001
-	REGULATOR ASSEMBLY (30K)	68-6002
2	HOSE ASSEMBLY (30K)	68-6003
3	MANIFOLD ASSEMBLY (30K)	N/A
4	SAFETY VALVE ASSEMBLY (15K, 30K)	68-6005
5	BURNER ASSEMBLY (15K, 30K)	N/A
6	FRONT GUARD (15K, 30K)	N/A
7	THERMOCOUPLE (15K, 30K)	68-6201
8	TANK COLLAR BRACKET (30K)	N/A
9	MOUNTING BOLT KNOB (30K)	N/A
10	REAR GUARD (15K, 30K)	N/A
11	MANIFOLD BRACKET - A (30K)	N/A
12	MANIFOLD SPRING (30K)	N/A
13	MANIFOLD BRACKET - B (30K)	N/A
14	NOZZLE	N/A
15	MPU LEAD WIRE - A (15K, 30K)	N/A
16	MPU LEAD WIRE - B (30K)	N/A
17	WING BOLT (15K, 30K)	N/A
18	TIPOVER SWITCH BRACKET (15K, 30K)	N/A
19	TIPOVER SWITCH (15K, 30K)	68-6200
20	WIND COVER (15K, 30K)	N/A

Manufactured by Mi-T-M
8650 Enterprise Drive, Peosta IA 52068
563-556-7484/ Fax 563-556-1235