



GEN-8000-0MK0

You can have power all day long with the durable 6000-watt, 7500-watt and 8000-watt generators. Ideal for jobsites where electric power isn't readily available so you can run multiple tools with quality power.

Alternator:

Total harmonic distortion (THD) less than 5% | 100% copper windings

Frame:

Heavy-duty powder coated wraparound frame with 1-inch steel tubing | Angled isolator design features four neoprene isolators

Components:

Easy-access and protected control panel with magnetic circuit breakers and GFCI-protected receptacles | Large low tone muffler | Fuel shut-off valve | Easy-to-read fuel gauge | Idle control | Voltmeter/hour meter | Heavy-duty industrial air cleaner

Miscellaneous:

USDA/USFS-approved spark arrestors



6000, 7500 & 8000-Watt Portable Gasoline Generators

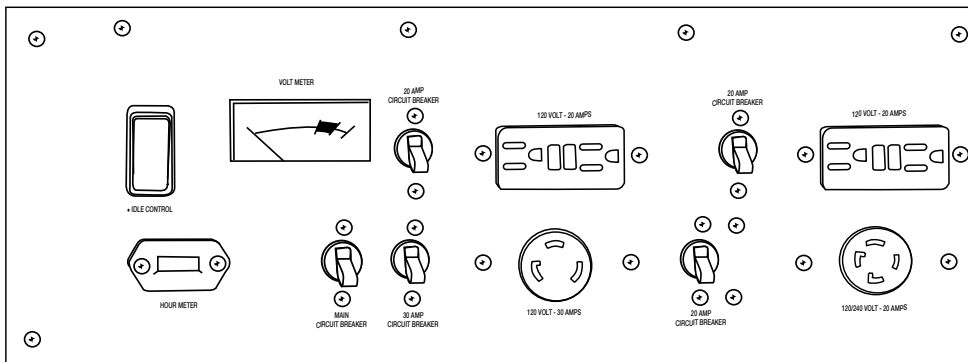
MODEL NO.	GEN-6000-0MHO / GEN-6000-0MHE / GEN-6000-0MKO	GEN-7500-0MHO / GEN-7500-0MHE	GEN-8000-0MKO / GEN-8000-0MKE
MAX. AC OUTPUT	6000 watts	7500 watts	8000 watts
RATED AC OUTPUT	5000 watts	6500 watts	6900 watts
DISPLACEMENT/ENGINE	389cc Honda GX390 OHV / 389cc Honda GX390 OHV with electric start - battery included / 429cc Kohler CH440 OHV	389cc Honda GX390 OHV / 389cc Honda GX390 OHV with electric start - battery included	429cc Kohler CH440 OHV / 429cc Kohler CH440 OHV with electric start - battery included
ALTERNATOR	Brushless 120V/240V, 60Hz	Brushless 120V/240V, 60Hz	Brushless 120V/240V, 60Hz
MAX. AMPS (120V/240V)	50.0/25.0	62.5/31.3	66.7/33.3
CONT. AMPS (120V/240V)	41.7/20.8	54.2/27.1	57.5/28.8
RECEPTACLES	(2) 120V, 20A GFCI duplex (1) 120V/240V, 20A twist lock (1) 120V, 30A twist lock	(2) 120V, 20A GFCI duplex (1) 120V, 30A twist lock (1) 120V/240V, 30A twist lock	(2) 120V, 20A GFCI duplex (1) 120V, 30A twist lock (1) 120V/240V, 30A twist lock
CIRCUIT BREAKERS	(1) Main circuit breaker (2) 20A toggle circuit breakers, single pole (1) 20A toggle circuit breaker, double pole (1) 30A toggle circuit breaker, single pole	(2) 20A toggle circuit breakers, single pole (1) 30A toggle circuit breaker, single pole (1) 30A toggle circuit breaker, double pole	(2) 20A toggle circuit breakers, single pole (1) 30A toggle circuit breaker, single pole (1) 30A toggle circuit breaker, double pole
RATED SPEED	3600 RPM	3600 RPM	3600 RPM
DECIBEL RATING	77.1	80.0	78.2
FUEL CAPACITY	7.3 gallons	7.3 gallons	7.3 gallons
RUN TIME (AT FULL LOAD)	8.0 hours	6.9 hours	6.9 hours
DIMENSIONS (LxWxH)	29x24.4x22.5in.	29x24.4x22.5in.	29x24.4x22.5in.
SHIP WT.	232 lb. / 240 lb. / 232 lb.	255 lb. / 263 lb.	255 lb. / 259 lb.
NET WT.	210 lb. / 218 lb. / 210 lb.	233 lb. / 241 lb.	233 lb. / 237 lb.

Noise level tested at seven meters (75% load). Rating represents minimum noise level rating.

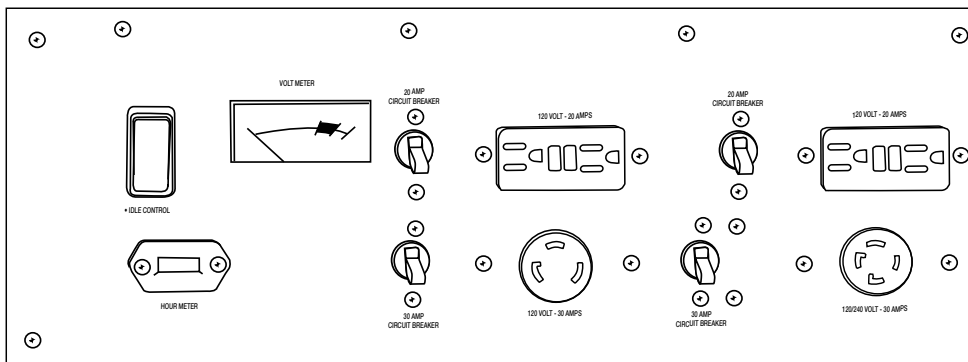
Accessories:

PART NUMBER	DESCRIPTION	FITS MODELS
32-0915	RV generator adapter - 30A/125V female/male. Use to connect RV cordsets to 30A generators	All models
AW-5090-0004	Lifting hook - For easier portability, folds down and out of the way when not in use	All models
AW-5740-0010	Wheel kit - For easier mobility, two flat-free tires and rubber gripped handles	All models
AW-6000-1002	Equipment cover - Keeps your equipment clean, dry and looking like new	All models

GEN-6000 Control Panel:



GEN-7500 & GEN-8000 Control Panel:



WARNING: Cancer and Reproductive Harm - www.P65Warnings.ca.gov.