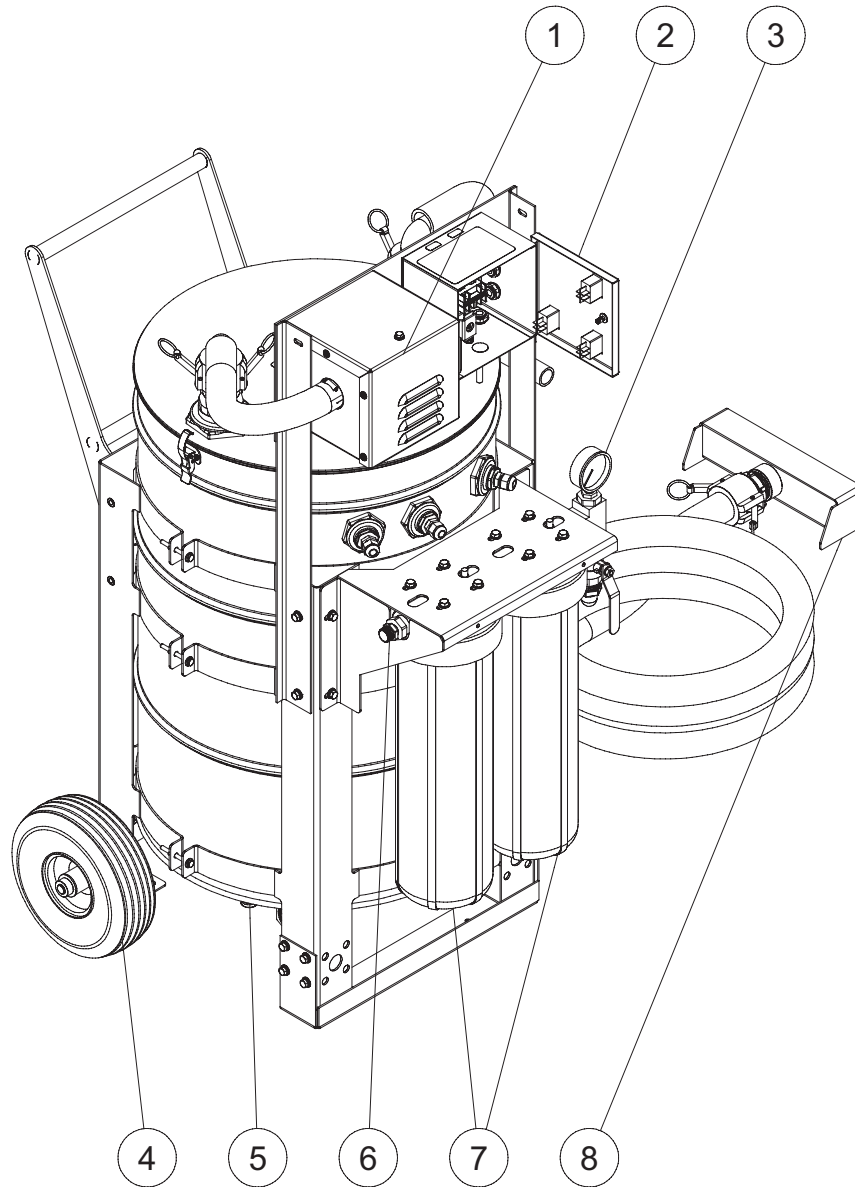


PORTABLE WATER RECOVERY UNITS



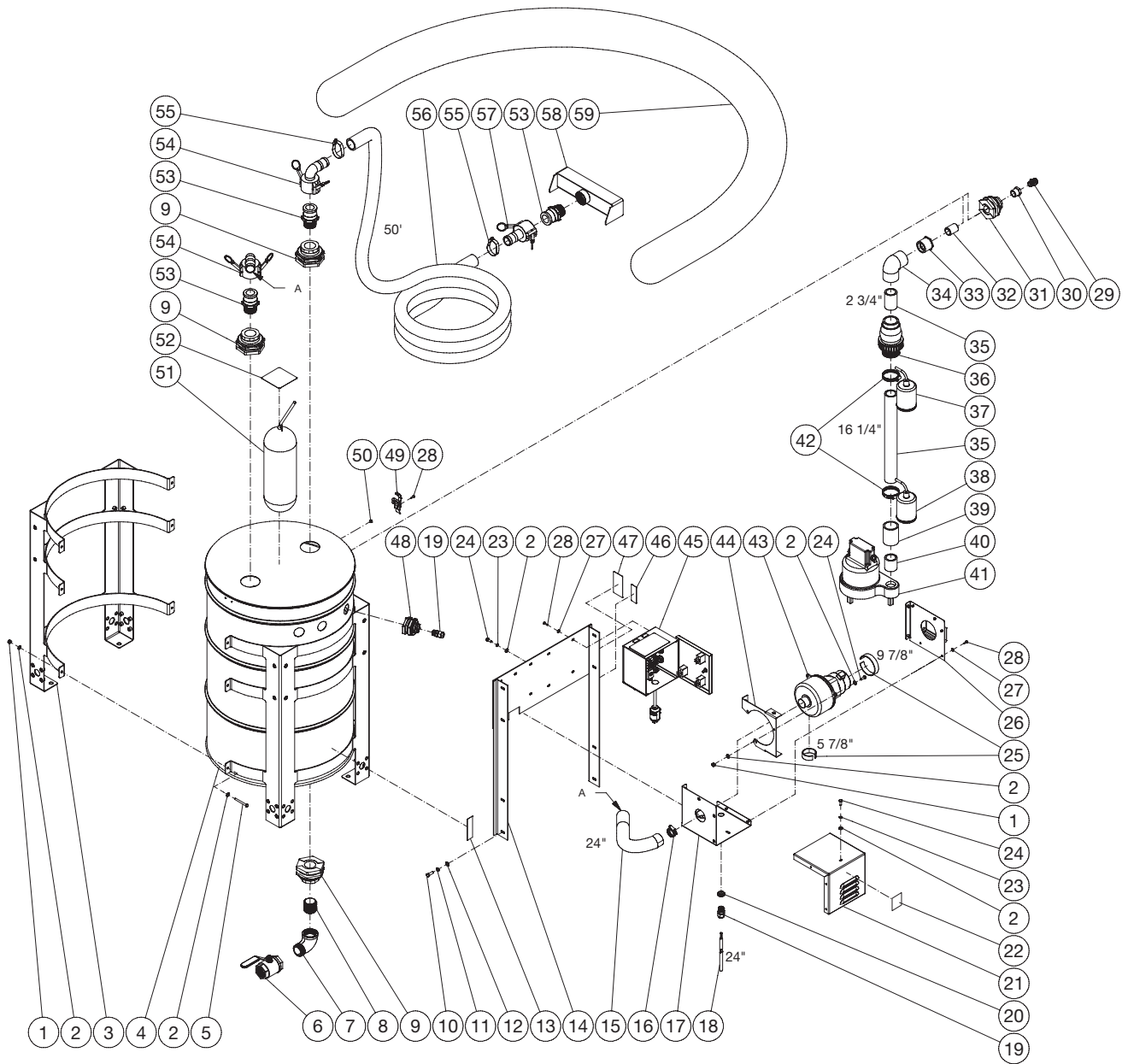
FEATURES LISTING

- | | |
|-------------------|----------------|
| 1. Vacuum | 5. Tank Drain |
| 2. Control Box | 6. Outlet |
| 3. Pressure Gauge | 7. Filter |
| 4. Wheel Kit | 8. Suction End |

NOTES

SERIAL NUMBER	DESCRIPTION
#30005269	WX-0107 OBSOLETE, WX-0109 CHANGED TO DUAL BAG FILTERS
#30007417	LARGER DRAIN, REDSIGNED VACUUM AND CONTROL BOX
#30007594	UPGRADED WIRING
#30008169	CHANGED FILTERS ON WX-0109.
#30008283	CHANGED SUMP PUMP TO GOULDS 3-0468

PWR-10-0ME1 (AFTER SERIAL #30008283)

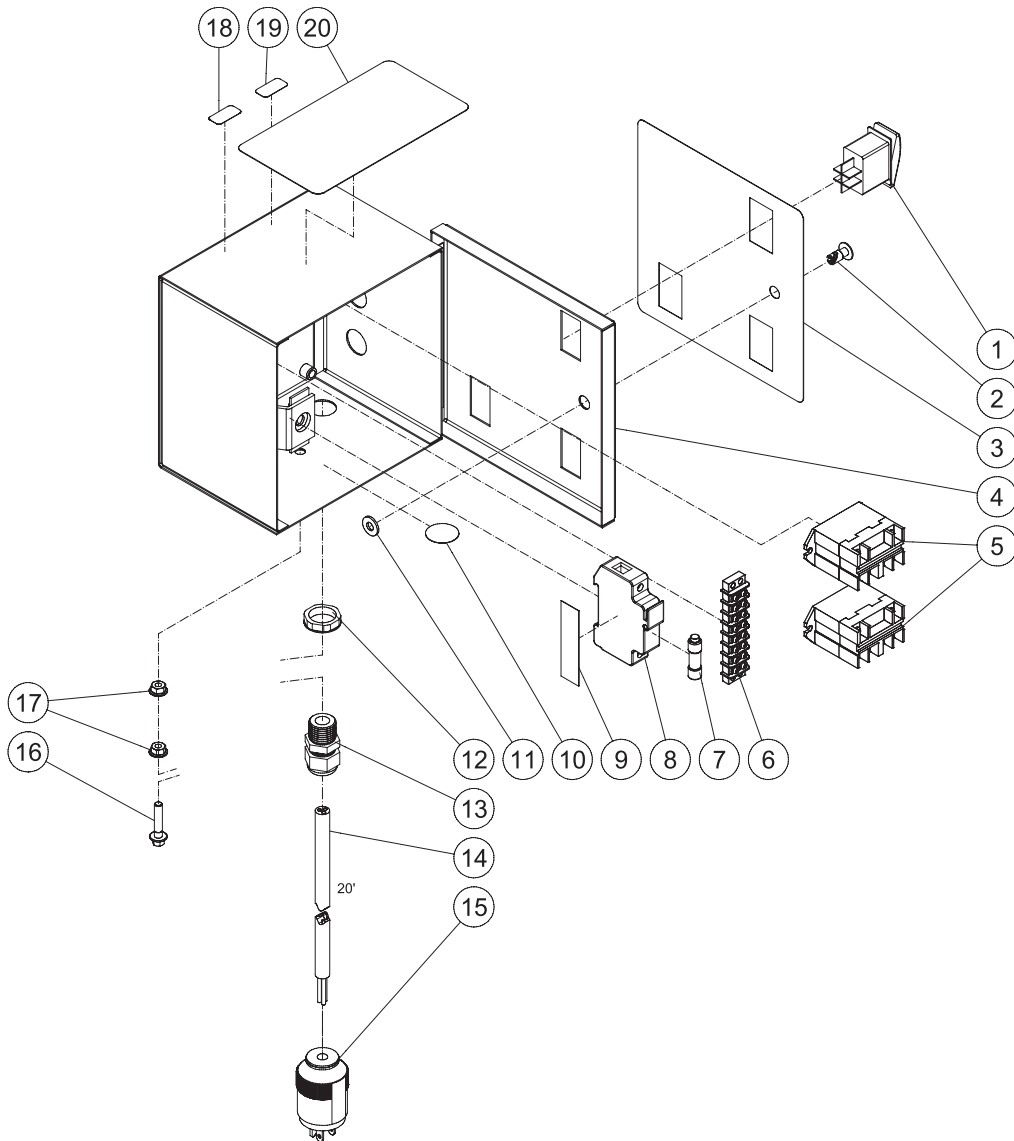


PWR-10-0ME1

PWR-10-0ME1 060222			
FRAME ASSEMBLY			
ITEM	DESCRIPTION	PART #	QTY
1	LOCKNUT	30-5155	9
2	WASHER	28-0121	25
3	BARREL STAND	20-1266A18	2
4	55 GALLON DRUM	12-0237	1
-	LID	33-0670	1
5	BOLT	27-8996	6
6	BALL VALVE	22-0499	1
7	ELBOW	24-0354	1
8	NIPPLE	24-0355	1
9	BULKHEAD (INC. 26-0421 GASKET)	55-1686	3
10	BOLT	27-5067	4
11	LOCKWASHER	29-1007	4
12	WASHER	28-0122	4
13	DECAL - TANK DRAIN (SEE 71-0110)	N/A	1
14	MOUNTING BRACKET	20-1418A18	1
15	HOSE *(TWO FEET REQUIRED)	15-0329	1
16	HOSE CLAMP	42-0018	1
17	VACUUM BOX	20-1415A18	1
18	CORD *(TWO FEET REQUIRED)	32-0074	1
19	STRAIN RELIEF	32-0437	4
20	ELECTRICAL LOCKNUT	32-0108	1
21	VACUUM BOX COVER	20-1414A18	1
22	DECAL	N/A	1
23	LOCKWASHER	29-1006	7
24	BOLT	27-5016	10
25	FOAM PADDING *(TWO FEET REQUIRED)	26-0303	1
26	VACUUM BOX SIDE	20-1416A18	1
27	WASHER	28-0120	12
28	SCREW	27-5033	16
29	ADAPTER	23-0136	1
30	REDUCER	55-1234	1
31	BULKHEAD (INC. 25-0482 GASKET)	55-1286	1
32	NIPPLE	55-1274	1
33	REDUCER	55-1629	1
34	ELBOW	55-1609	1
35	PIPE *(TWO FEET REQUIRED)	55-1600	1
36	CHECK VALVE	55-1652	1
37	FLOAT	32-0529	1
38	FLOAT	32-0527	1
39	COUPLER	55-1614	1
40	TOE NIPPLE	55-1679	1
41	PUMP-SUBMERSIBLE	3-0468	1
42	HOSE CLAMP	42-0060	2
43	VACUUM	2-0190	1
44	VACUUM BRACKET	20-1417A18	1
45	CONTROL BOX ASSEMBLY	N/A SEP.	1
46	DECAL - PROP 65	N/A	1
47	DECAL - SILVER STICKER	N/A	1
48	BULKHEAD (INC. 25-0506 GASKET)	55-0886	3
49	LATCH	33-0528	2
50	NUT	30-9516	4
51	OIL BOOM	33-0529	2
52	DECAL - NONPOTABLE WATER (SEE 71-0110)	N/A	1
53	ADAPTER	55-0024	3
54	COUPLER	55-1681	2
55	HOSE CLAMP	42-0027	2
56	HOSE *(FIFETY FEET REQUIRED)	15-0223	1
57	COUPLER	55-0053	1
58	VACUUM END	21-0306	1
59	WATER DIKE	33-0520	1
-	DECAL SET	71-0110	1

*MUST ORDER IN ONE FOOT LENGTHS

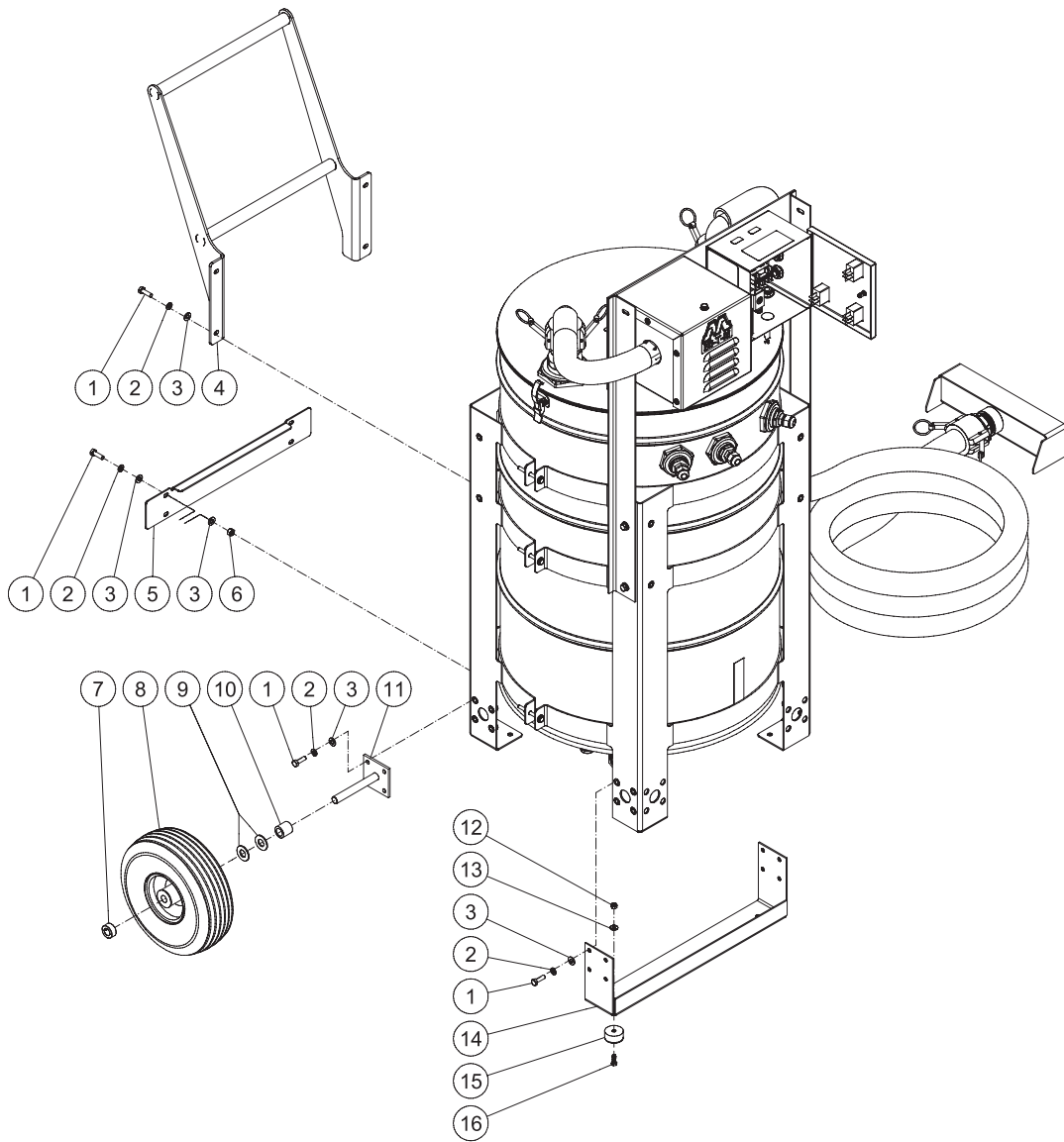
CONTROL BOX ASSEMBLY (AFTER SERIAL #30007594)



CONTROL BOX ASSEMBLY

CONTROL BOX ASSEMBLY PWR-10-0ME1 101416 MLK			
CONTROL BOX ASSEMBLY			
ITEM	DESCRIPTION	Mi-T-M #	QTY
1	ROCKER SWITCH	32-0669	3
2	FASTENER	33-0197	1
3	DECAL- PWR CONTROL BOX (SEE 71-0110)	N/A	1
4	CONTROL BOX	20-1419A18	1
5	RELAY	32-0633	2
6	TERMINAL STRIP	32-0436	1
7	FUSE	32-1162	1
8	FUSE HOLDER	32-0473	1
9	VELCRO STRIP *(ONE FOOT REQUIRED)	36-0011	1
10	DECAL- GROUND PICTORIAL (SEE 71-0110)	N/A	1
11	RUBBER WASHER	26-0259	1
12	ELECTRICAL LOCKNUT	32-0108	5
13	STRAIN RELIEF	32-0437	5
14	CORD *(TWENTY FEET REQUIRED)	32-0445	1
15	PLUG	32-0121	1
16	BOLT	27-8898	1
17	NUT	30-3022	2
18	DECAL - 115 VOLT (SEE 71-0110)	N/A	1
19	DECAL - 1 PHASE (SEE 71-0110)	N/A	1
20	DECAL - RISK OF ELECTROCUTION (SEE 71-0110)	N/A	1
-	DECAL SET	71-0110	1
*MUST ORDER IN ONE FOOT LENGTHS			

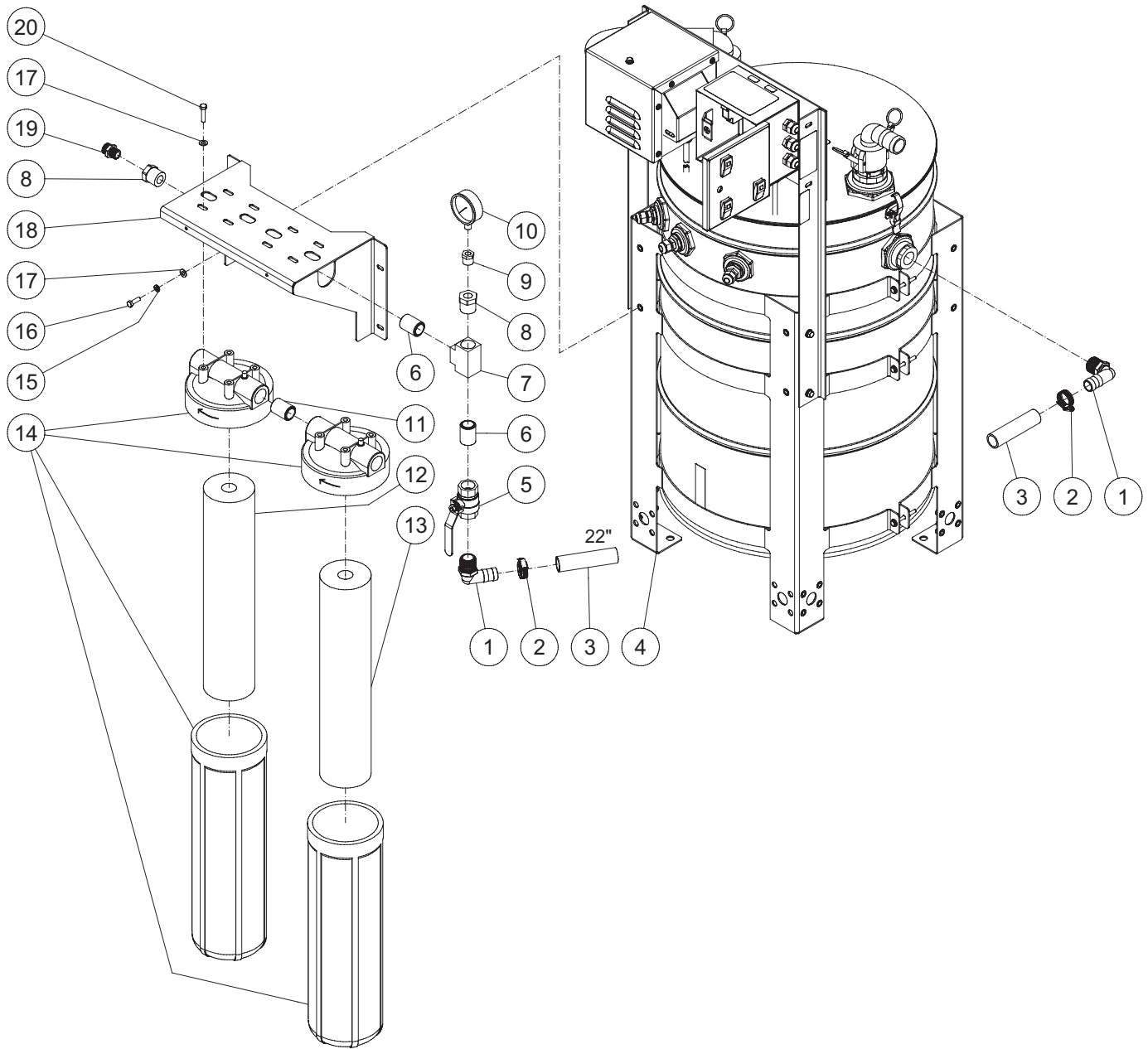
WX-0106 WHEEL KIT OPTION



WX-0106 WHEEL KIT OPTION

WX-0106 120915 MLK			
OPTION - WHEEL KIT			
ITEM	DESCRIPTION	Mi-T-M #	QTY
1	BOLT	27-5067	24
2	LOCKWASHER	29-1007	24
3	WASHER	28-0122	28
4	HANDLE	7-0231A18	1
5	KICK PLATE	20-1273A18	1
6	LOCKNUT	30-5158	4
7	COLLAR	33-0351	2
8	WHEEL	14-0130	2
9	WASHER	28-0008	4
10	SPACER	62-0188	2
11	AXLE	20-0670A01	2
12	LOCKNUT	30-0155	2
13	WASHER	28-0002	2
14	ISOLATOR FOOT	20-1271A18	1
15	ISOLATOR	14-0069	2
16	BOLT	27-0015	2

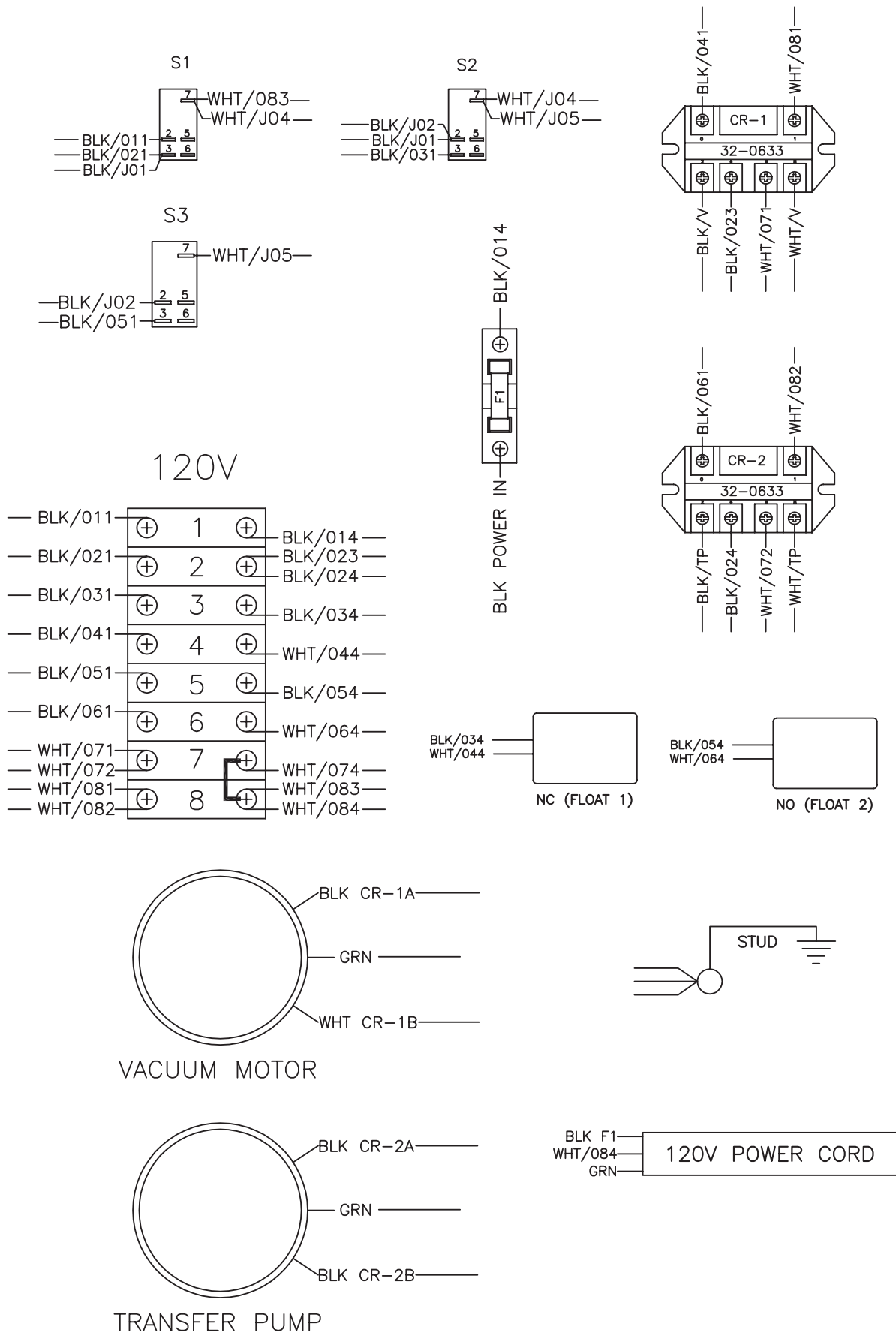
WX-0109 DUAL FILTER OPTION (AFTER SERIAL #30008169)



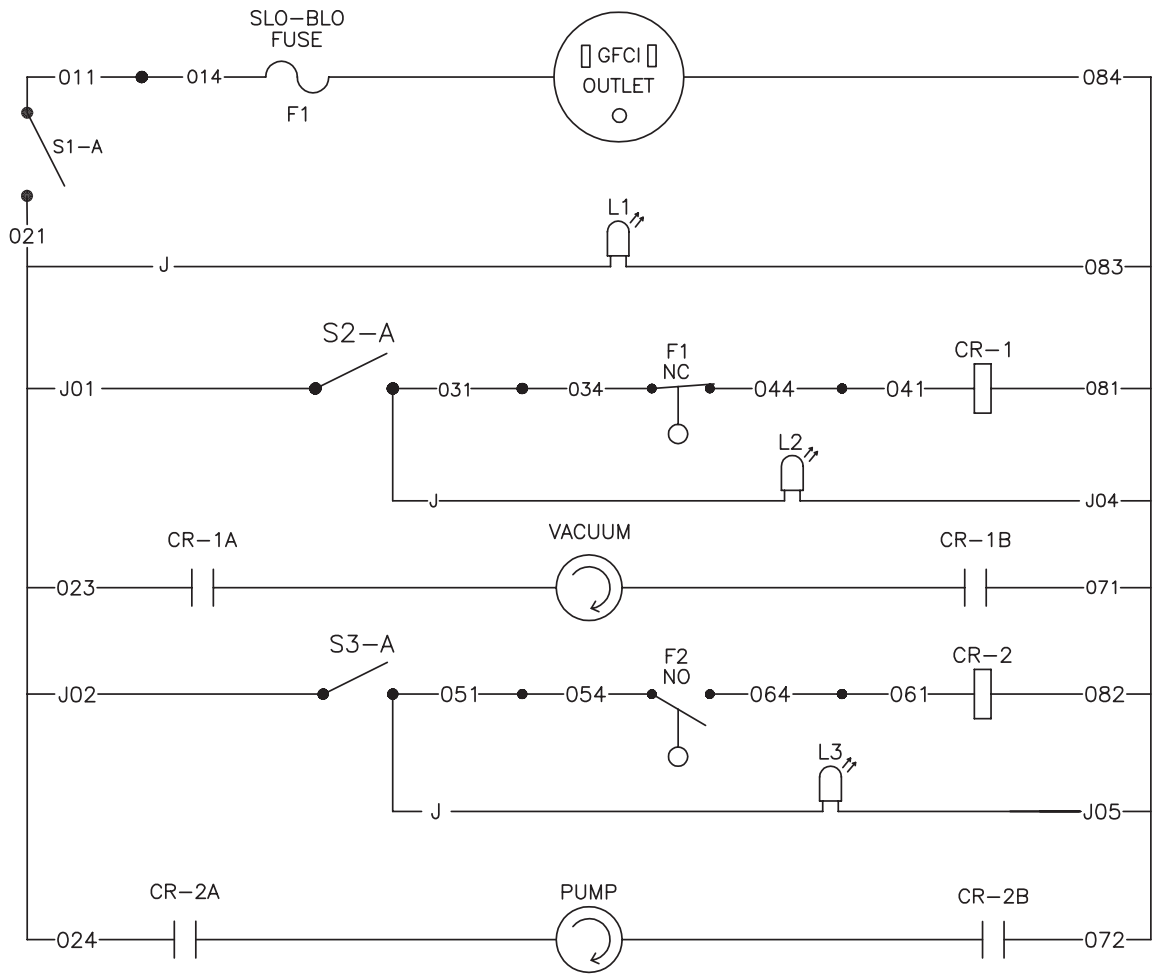
WX-0109 DUAL FILTER OPTION

WX-0190 032921			
OPTION- FILTERS			
ITEM	TITLE	PART #	QTY
1	ELBOW	55-1293	2
2	HOSE CLAMP	42-0018	2
3	HOSE *(TWO FEET REQUIRED)	15-0290	2
4	PORTABLE WASH RECOVERY UNIT	N/A SEP.	1
5	BALL VALVE	22-0344	1
6	NIPPLE	23-0094	2
7	BRASS TEE	23-0149	1
8	REDUCER	23-0226	2
9	REDUCER	23-0056	1
10	PRESSURE GAUGE	22-0476	1
11	NIPPLE	55-1274	1
12	FILTER	19-0302	1
13	FILTER	19-0216	1
14	FILTERS HOUSING	19-0634	2
15	LOCKWASHER	29-1007	4
16	BOLT	27-5067	4
17	WASHER	28-0122	12
18	FILTER BRACKET	20-1663A18	1
19	ADAPTER	23-0136	1
20	BOLT	27-5276	8
-	FILTER WRENCH	33-0378	1
*MUST ORDER IN ONE FOOT LENGTHS			

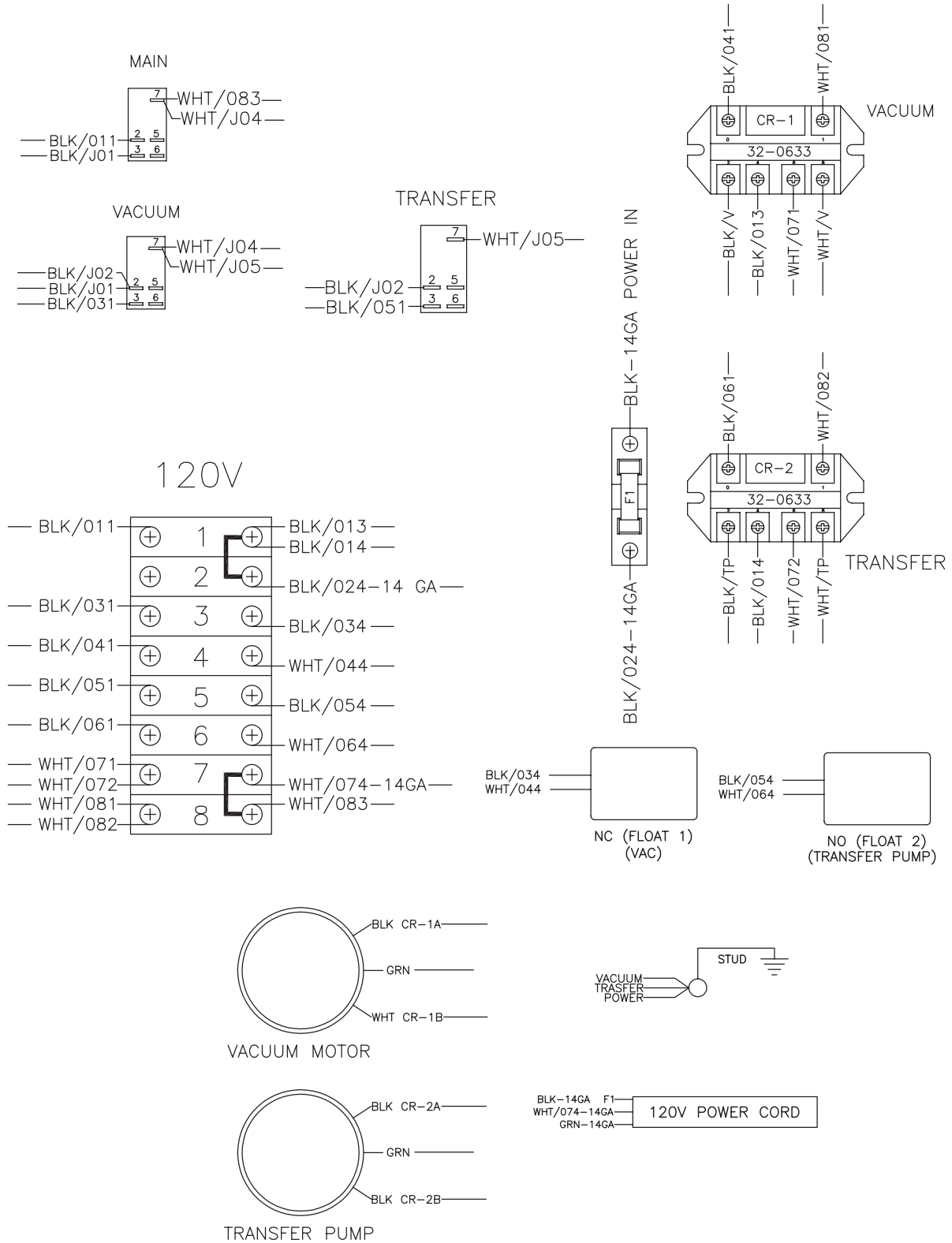
WIRING DIAGRAM (BEFORE SERIAL #3007594)



LADDER DIAGRAM (BEFORE SERIAL #3007594)



WIRING DIAGRAM (AFTER SERIAL #30007594)



LADDER DIAGRAM (AFTER SERIAL #30007594)

