



PARTS LIST FOR  
***WCU-35-OME1 / OME3***  
UNDERCARRIAGE WASH SYSTEM

Congratulations on the purchase of your new Mi-T-M Undercarriage Wash System! This parts listing has been compiled for your benefit. You can be assured your Mi-T-M Undercarriage Wash System was constructed and designed with quality and performance in mind. Each component has been rigorously tested to insure the highest level of acceptance.

The contents of this parts listing are based on the latest product information available at the time of publication. Mi-T-M reserves the right to make changes in price, color, materials, equipment, specifications or models at any time without notice.

### **WARNING**

**THIS IS A PROFESSIONAL CLEANING SYSTEM. CAUTION SHOULD BE OBSERVED WHEN USING OR REPAIRING THIS UNIT! READ AND FOLLOW THE SAFETY WARNINGS LISTED BELOW BEFORE ATTEMPTING ANY REPAIRS ON THIS UNDERCARRIAGE WASH SYSTEM!**

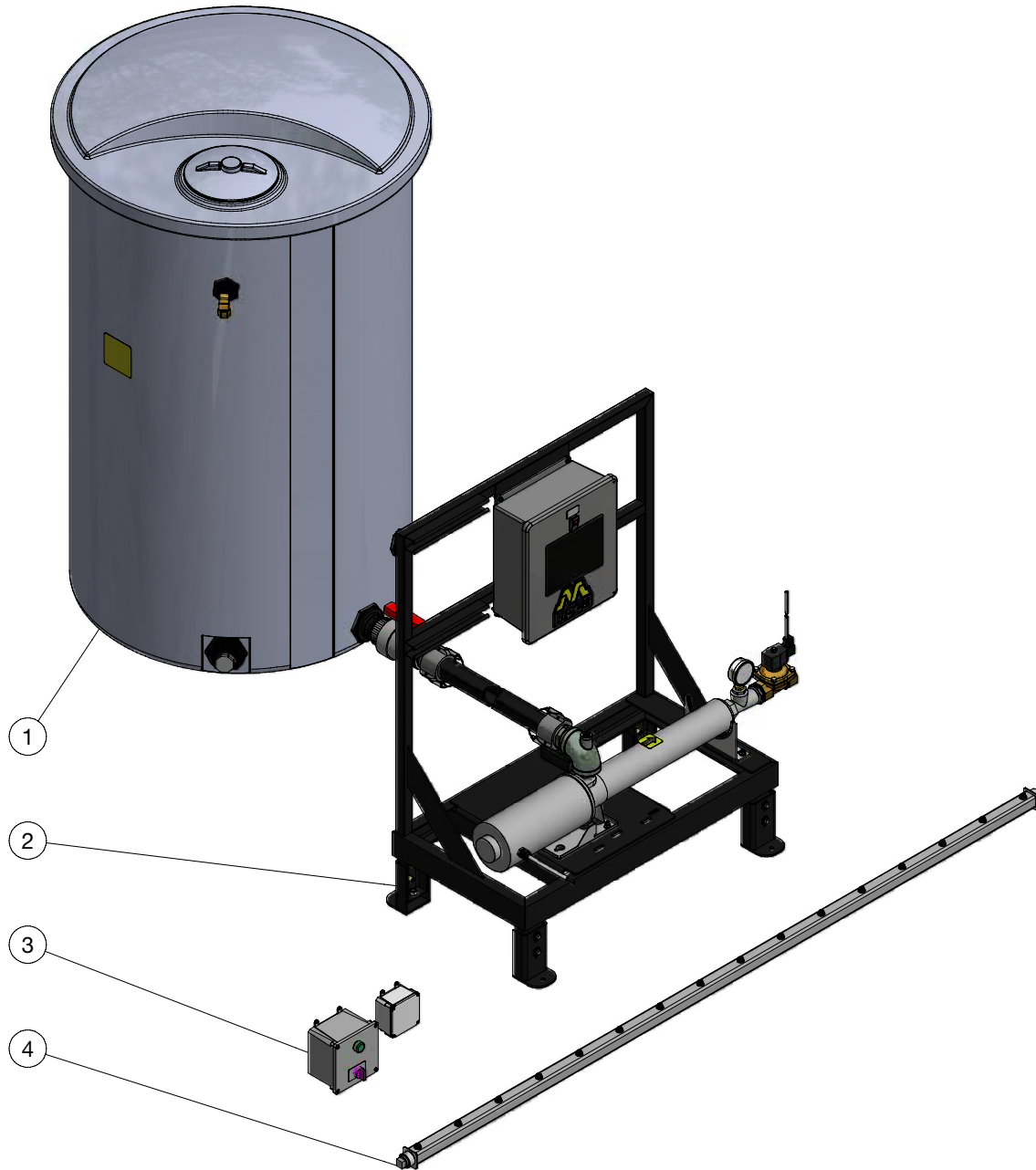
### **SAFETY WARNINGS**

1. Serious injury or death could occur if the Undercarriage Wash System (Power Supply) is not properly grounded. Your Undercarriage Wash System is powered by electricity and may cause electric shock or electrocution if not installed properly. Installation to this unit, including all electrical connections, must comply with all local, state and national codes. Any electrical wiring or repairs performed on this Undercarriage Wash System should be done by Authorized Service Personnel in accordance with National and Local electrical codes.
2. NEVER alter or modify the equipment. Use only genuine Mi-T-M parts for repair of your Undercarriage Wash System. Failure to do so can cause hazardous operating conditions and will VOID warranty.
3. Know how to stop and bleed pressures quickly. Be thoroughly familiar with controls. Do not operate without protective gear. Follow the maintenance instructions specified in your operator's manual.
4. Before servicing, ALWAYS shut off the water and the unit. NEVER assume the Undercarriage Wash System is safe to work on just because it is not operating. It could restart at any time! ALWAYS disconnect from the power source.

## Table of Contents

<b>WARNING</b> .....	<b>2</b>
<b>SAFETY WARNINGS</b> .....	<b>2</b>
<b>WCU UNIT ASSEMBLY</b> .....	<b>4</b>
<b>WCU SKID ASSEMBLY</b> .....	<b>6</b>
<b>CENTRIFUGAL PUMP (3-0456 AND 3-0457)</b> .....	<b>8</b>
<b>PRODUCT TANK ASSEMBLY</b> .....	<b>10</b>
<b>SPRAY BAR ASSEMBLY</b> .....	<b>12</b>
<b>CONTROL BOX ASSEMBLY</b> .....	<b>14</b>
<b>REMOTE BOX ASSEMBLY</b> .....	<b>16</b>
<b>ELECTRICAL SCHEMATIC (208V-230V) (1 PHASE)</b> .....	<b>18</b>
<b>WIRING DIAGRAM (208V-230V) (1 PHASE)</b> .....	<b>19</b>
<b>ELECTRICAL SCHEMATIC (208V-230V/460V) (3 PHASE)</b> .....	<b>20</b>
<b>WIRING DIAGRAM (208V-230V/460V) (3 PHASE)</b> .....	<b>21</b>

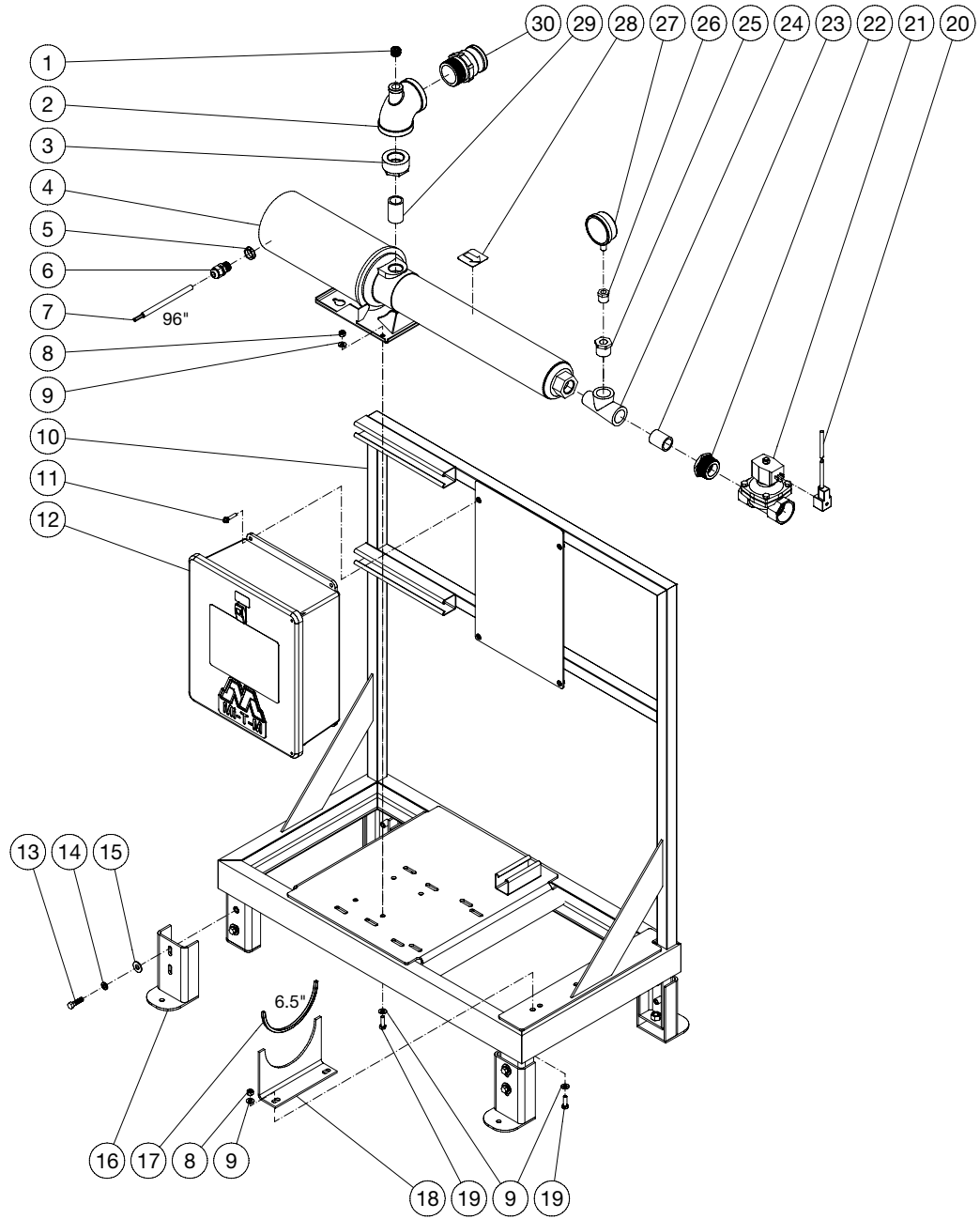
# WCU UNIT ASSEMBLY



WCU UNIT ASSY 020121 JRC

WCU UNIT ASSY 020121 JRC			
UNIT ASSEMBLY			
ITEM	DESCRIPTION	PART #	QTY
1	PRODUCT TANK ASSEMBLY	N/A	1
2	SPRAY BAR SKID ASSEMBLY	N/A	1
3	REMOTE BOX ASSEMBLIES	N/A	1
4	SPRAY BAR ASSEMBLY	N/A	1
NOT SHOWN	SPRAY BAR COVER	20-1647A18	1

# WCU SKID ASSEMBLY



WCU SKID ASSEMBLY 012821 JRC

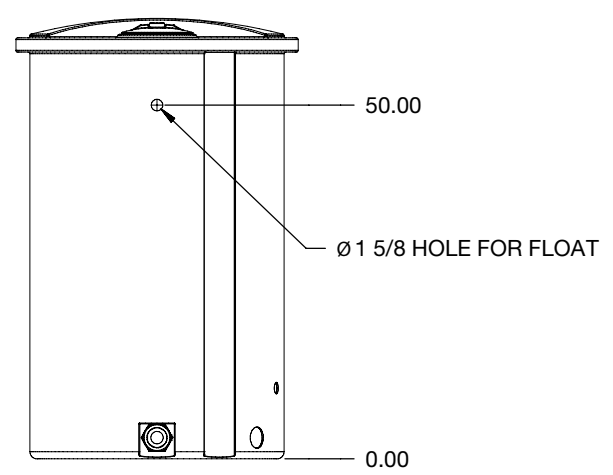
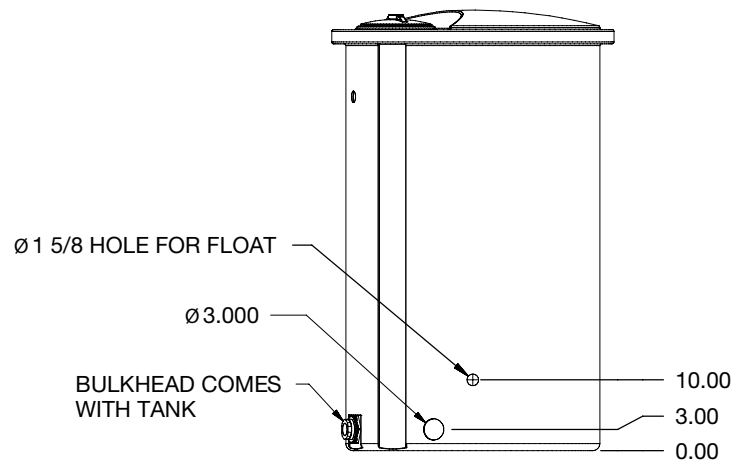
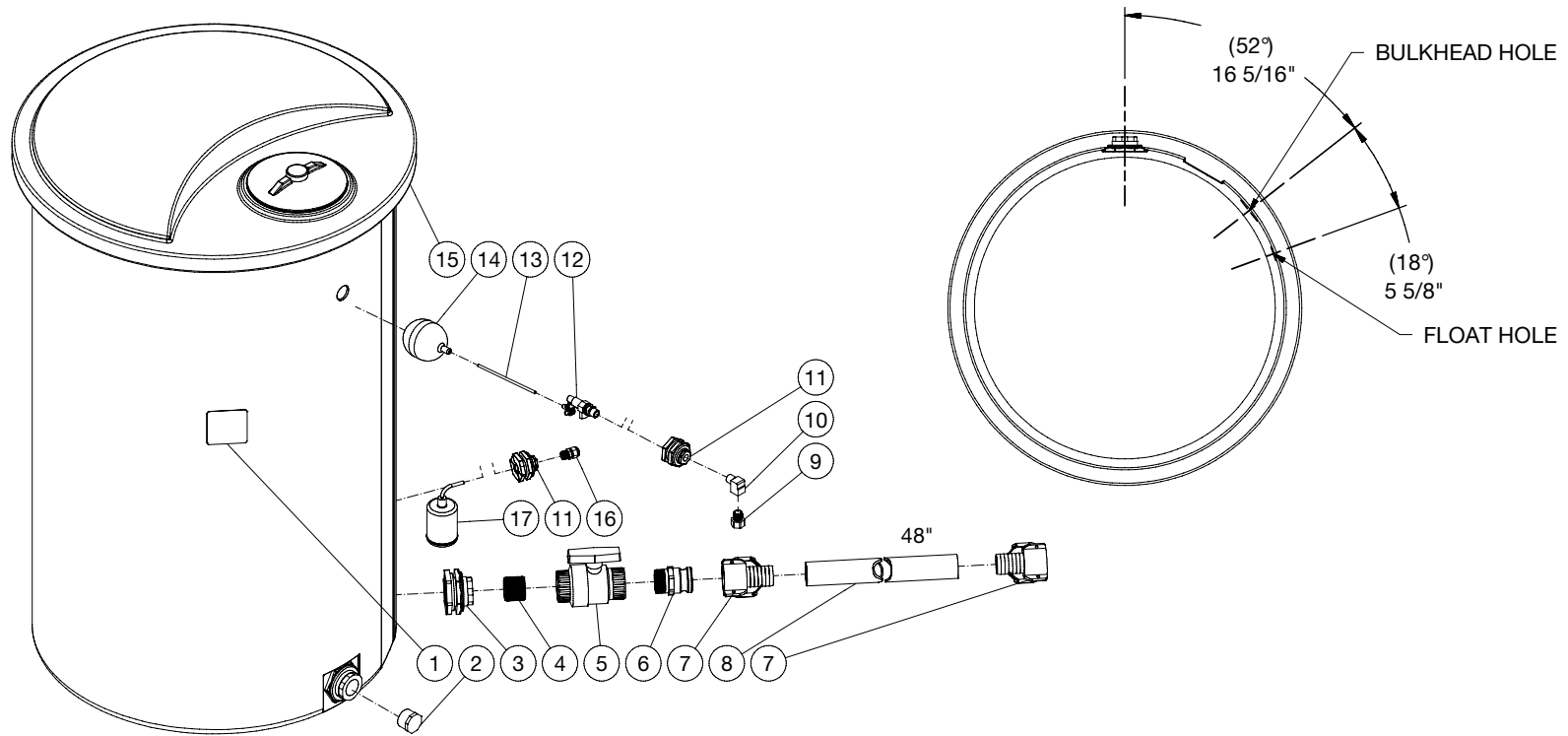
WCU SKID ASSEMBLY 012821 JRC			
SKID ASSEMBLY			
ITEM	TITLE	PART #	QTY
1	PLUG	24-0338	1
2	TEE	24-0220	1
3	REDUCER	24-0233	1
4	PUMP-MULTISTAGE 1 PH	3-0456	1
-	PUMP-MULTISTAGE 3 PH	3-0457	1
5	ELECTRICAL LOCKNUT	32-0108	1
6	STRAIN RELIEF	32-0437	1
7	CORD *(EIGHT FEET REQUIRED) 1 PH	32-0440	1
-	CORD *(EIGHT FEET REQUIRED) 3 PH	33-1056	1
8	LOCKNUT	30-5158	6
9	WASHER	28-0122	12
10	FRAME	5-0141A18	1
11	BOLT	27-8898	4
12	CONTROL BOX	N/A	1
13	BOLT	27-0118	8
14	LOCKWASHER	29-0008	8
15	WASHER	28-0023	8
16	FOOT	20-0502A01	4
17	EDGING *(ONE FOOT REQUIRED)	33-0020	1
18	BRACKET	20-1646A18	1
19	BOLT	27-5067	6
20	CORDSET	32-0786	1
21	SOLENOID	22-0535	1
22	BUSHING	24-0379	1
23	NIPPLE	24-0200	1
24	STREET TEE	24-0117	1
25	REDUCER	24-0303	1
26	REDUCER	23-0056	1
27	GAUGE	22-0292	1
28	DECAL	34-0883	1
29	NIPPLE	24-0324	1
30	ADAPTER	55-0054	1
*MUST ORDER IN ONE FOOT LENGTHS			



3-0456\_3-0457 012821

PUMP ASSEMBLY			
REF #	DESCRIPTION	PART #	QTY
1	DISCHARGE HEAD	N/A	1
2	O-RING PUMP CASING	25-0739	2
3	PUMP CASING	N/A	1
4A	BEARING AND SPIDER ASSY	46-1852	1
6	KLIP RING	46-1853	1
7	DIFFUSER	46-1854	13
8	IMPELLER	46-1855	13
9	BOWL	46-1856	13
10	SHIM	N/A	VARIES
11	SHAFT/COUPLING ASSY	46-1857	1
12	MECHANICAL SEAL	26-0435	1
13	MOTOR ADAPTER	N/A	1
14	SCREW-MOTOR TO MOTOR ADAPTER	N/A	4
15	-	-	-
16	SCREW-BASE TO MOTOR ADAPTER	N/A	1
17	BASE	N/A	1
18	PLUG	N/A	1
19	COUPLING O-RING	25-0740	1
20	DEFLECTOR-BUNA	N/A	1
21	MOTOR 1 PHASE	N/A	1
21	MOTOR 3 PHASE	N/A	1

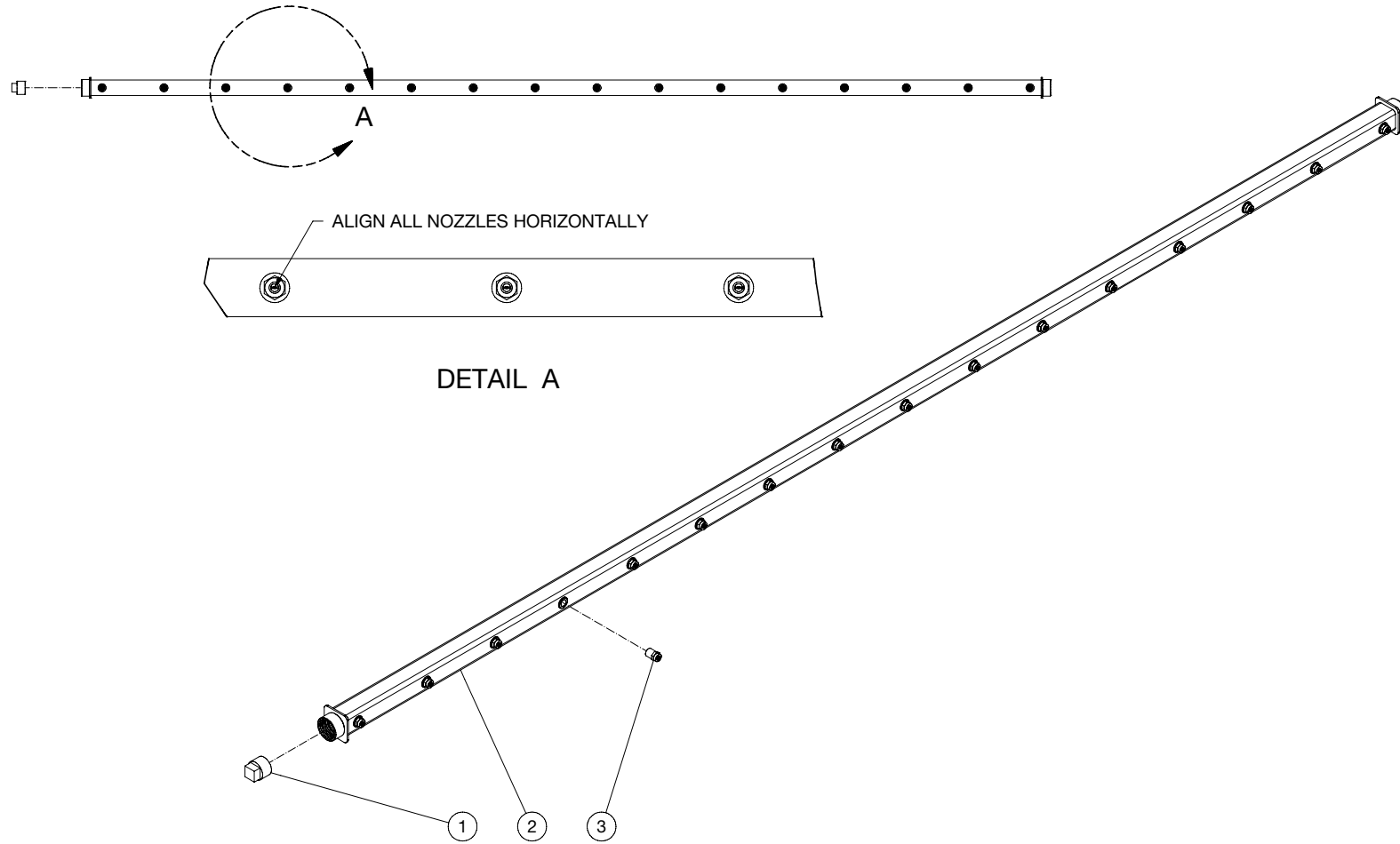
# PRODUCT TANK ASSEMBLY



WCU PRODUCT TANK ASSEMBLY 020121 JFC

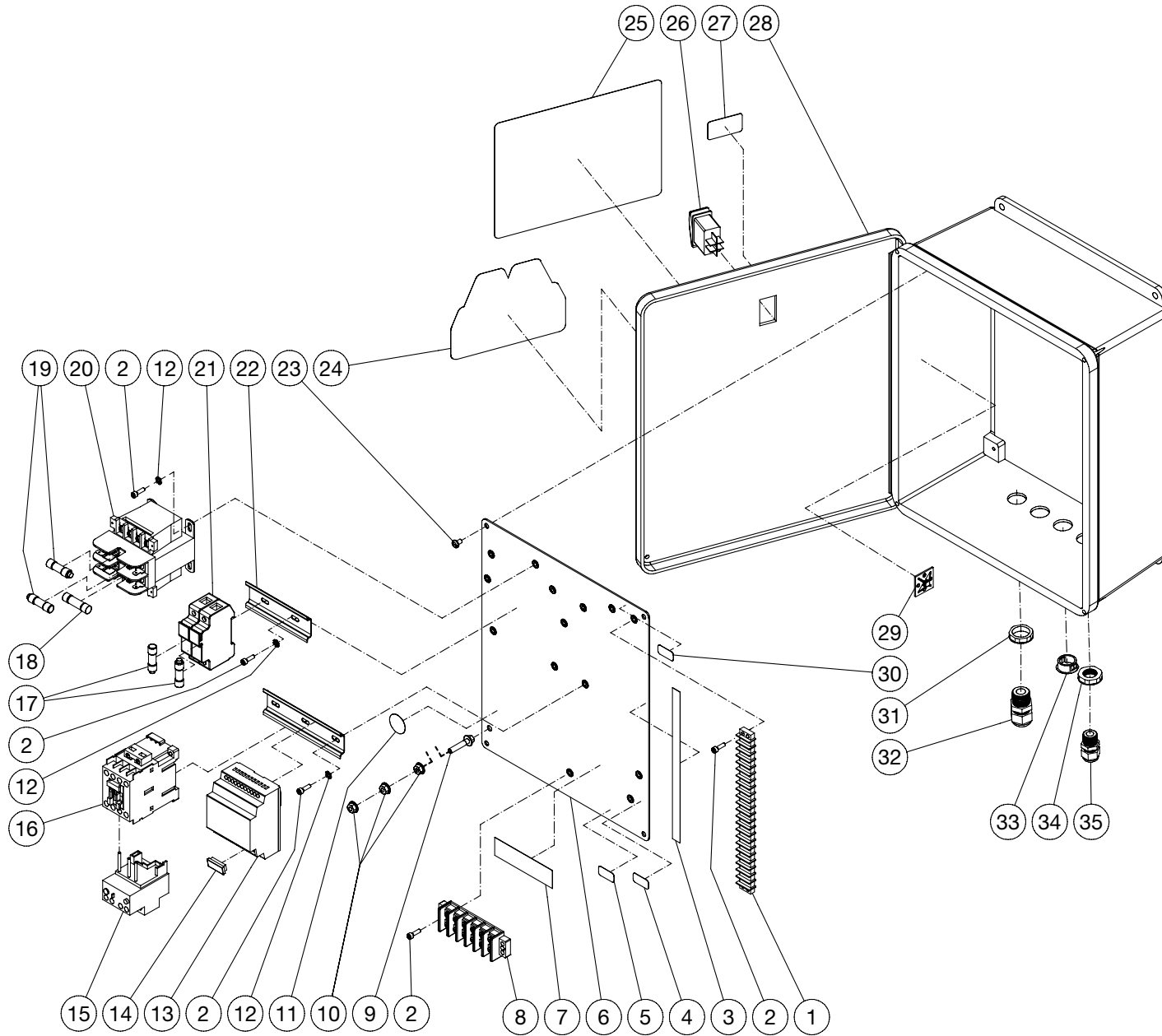
WCU PRODUCT TANK ASSEMBLY020121 JRC			
PRODUCT TANK ASSEMBLY			
ITEM	TITLE	PART #	QTY
1	DECAL - NONPOTABLE WATER (SEE 71-0164)	N/A	1
2	PLUG	55-1640	1
3	BULKHEAD (INC. 26-0421 GASKET)	55-1886	1
4	NIPPLE	55-1874	1
5	BALL VALVE	55-1854	1
6	ADAPTER	55-0054	1
7	COUPLER	55-0055	2
8	HOSE *(FOUR FEET REQUIRED)	15-0213	1
9	SWIVEL	23-0095	1
10	ELBOW	23-0035	1
11	BULKHEAD	55-0886	2
12	FLOAT VALVE ASSY	22-0402	1
13	BALL FLOAT STUD	31-3320	1
14	FLOAT	22-0059	1
15	250 GALLON TANK	12-0269	1
16	STRAIN RELIEF	32-0437	1
17	FLOAT	32-0527	1
*MUST ORDER IN ONE FOOT LENGTHS			

# SPRAY BAR ASSEMBLY



WCU SPRAY BAR ASSEMBLY 010821JJR			
SPARY BAR ASSEMBLY			
ITEM	TITLE	PART #	QTY
1	PLUG	24-0219	1
2	SPRAY BAR ASSY	21-0341	1
3	NOZZLE 2515	18-0117	16

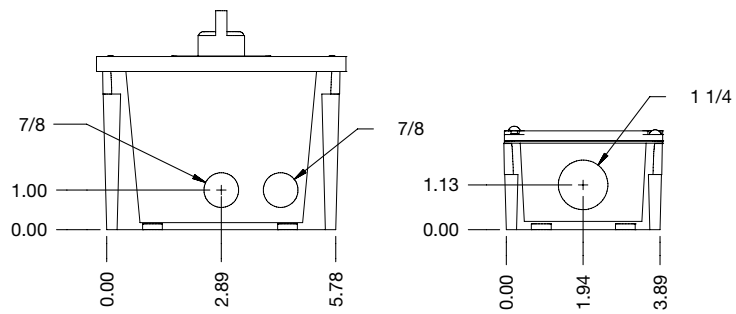
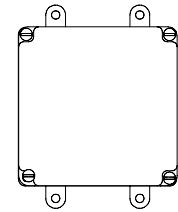
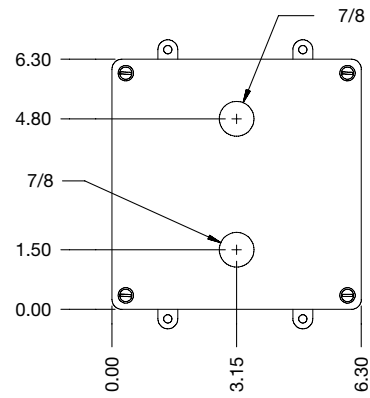
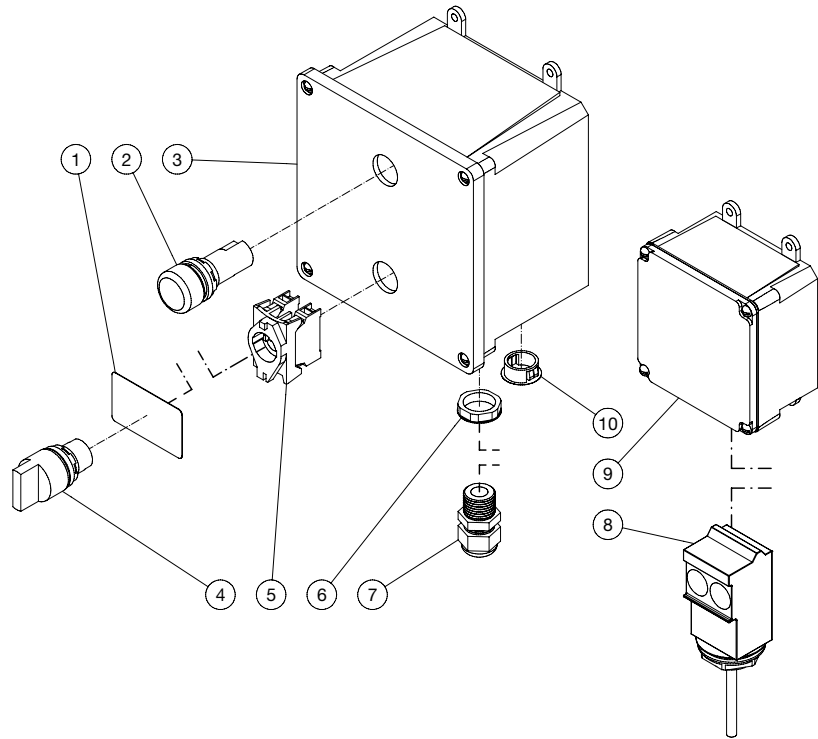
# CONTROL BOX ASSEMBLY



WCU CONTROL BOX ASSEMBLY 010126

WCU CONTROL BOX ASSEMBLY 010126			
CONTROL BOX ASSEMBLY			
ITEM	TITLE	PART #	QTY
1	TERMINAL STRIP	32-0463	1
2	SCREW	27-8835	10
3	DECAL - TERMINAL STRIP (SEE 71-0164)	N/A	1
4	DECAL - 1 PHASE (SEE 71-0164)	N/A	1
-	DECAL-3 PHASE (SEE 71-0164)	N/A	1
5	DECAL - 230 VOLT (SEE 71-0164)	N/A	1
-	DECAL-460V (SEE 71-0164) WX-0144	34-0898	1
6	ELECTRICAL PLATE	20-0520A06	1
7	DECAL - TERMINAL STRIP (SEE 71-0164)	N/A	1
8	TERMINAL BLOCK	32-0536	1
9	BOLT	27-8898	1
10	NUT	30-3022	3
11	DECAL- GROUND PICTORIAL (SEE 71-0164)	N/A	1
12	STAR WASHER	28-1009	6
13	PROGRAMMABLE RELAY	855-0072	1
14	PROGRAMMABLE RELAY CHIP	32-0779	1
15	OVERLOAD RELAY 0ME1	32-0482	1
-	OVERLOAD RELAY 0ME3	32-1016	1
-	OVERLOAD RELAY WX-0144	32-1014	1
16	CONTACTOR 0ME1	32-0329	1
-	CONTACTOR 0ME3	32-1153	1
17	FUSE 0ME1	32-1027	2
-	FUSE 0ME3	32-0675	3
-	FUSE WX-0144	32-1253	1
18	FUSE	32-0323	1
19	FUSE	32-0467	2
-	FUSE WX-0144	32-0325	1
20	TRANSFORMER	32-0313	1
21	FUSE HOLDER 0ME1	32-1006	1
-	FUSE HOLDER 0ME3	32-1007	1
22	DIN RAIL - 3 FT SECTION	32-0316	2
23	SCREW	27-8933	4
24	DECAL - Mi-T-M (SEE 71-0164)	34-2169	1
25	DECAL - BIO ELECTRIC BOX (SEE 71-0164)	N/A	1
26	ROCKER SWITCH	32-0731	1
27	DECAL - POWER ON	N/A	1
28	ELECTRIC BOX-FIBERGLASS 14X12	32-1030	1
29	MOUNTING BASE	32-0621	1
30	DECAL - 24V (SEE 71-0164)	N/A	1
31	ELECTRICAL LOCKNUT	32-0108	2
32	STRAIN RELIEF	32-0437	2
33	PLUG	39-0014	1
34	ELECTRICAL LOCKNUT	32-0587	1
35	STRAIN RELIEF	32-0586	1

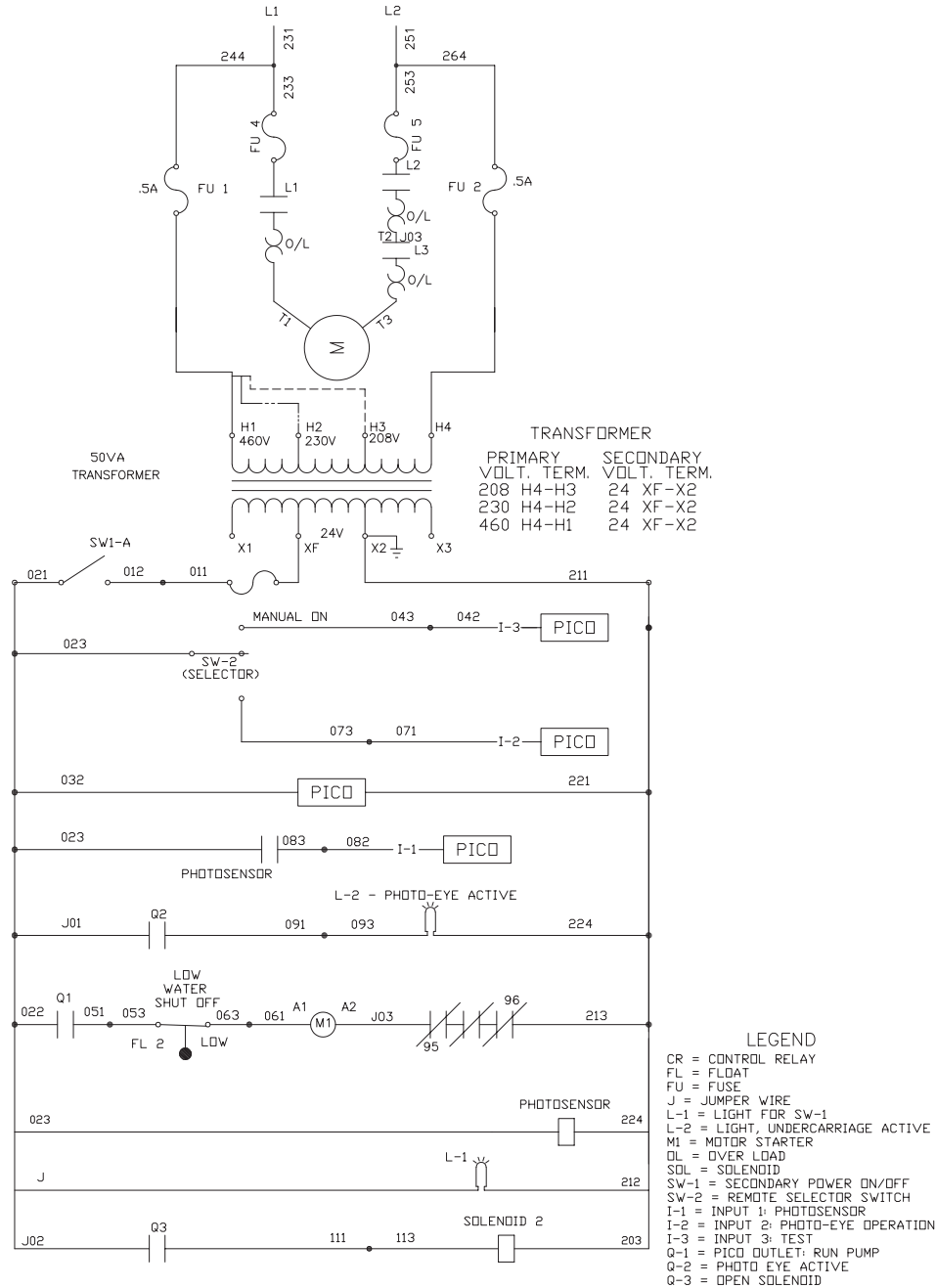
# REMOTE BOX ASSEMBLY



WCU REMOTE BOX ASSEMBLY 022221 JJR

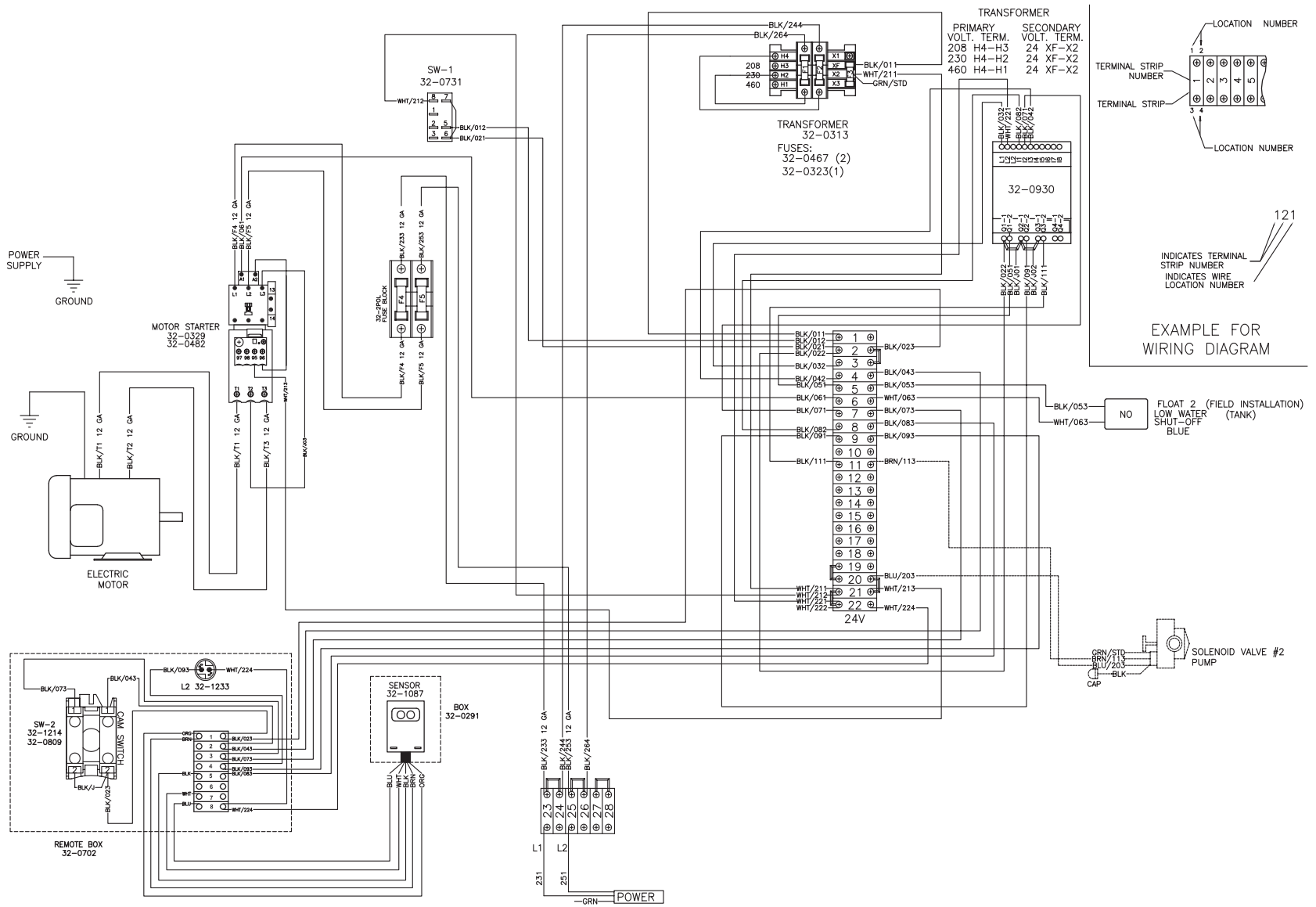
WCU REMOTE BOX ASSEMBLY 012221 JJR			
REMOTE BOX ASSEMBLY			
ITEM	TITLE	PART #	QTY
1	DECAL - OPERATE/TEST SWITCH	34-1734	1
2	INDICATOR LIGHT	32-1233	1
3	BOX 6X6X4 PLASTIC	32-0702	1
4	3 - WAY SWITCH	32-1214	1
5	SWITCH	32-0809	1
6	ELECTRICAL LOCKNUT	32-0108	1
7	STRAIN RELIEF	32-0437	1
8	PHOTO SENSOR 24V	32-1087	1
9	32-0291	32-0291	1
10	PLUG	39-0014	1

# ELECTRICAL SCHEMATIC (208V-230V) (1 PHASE)



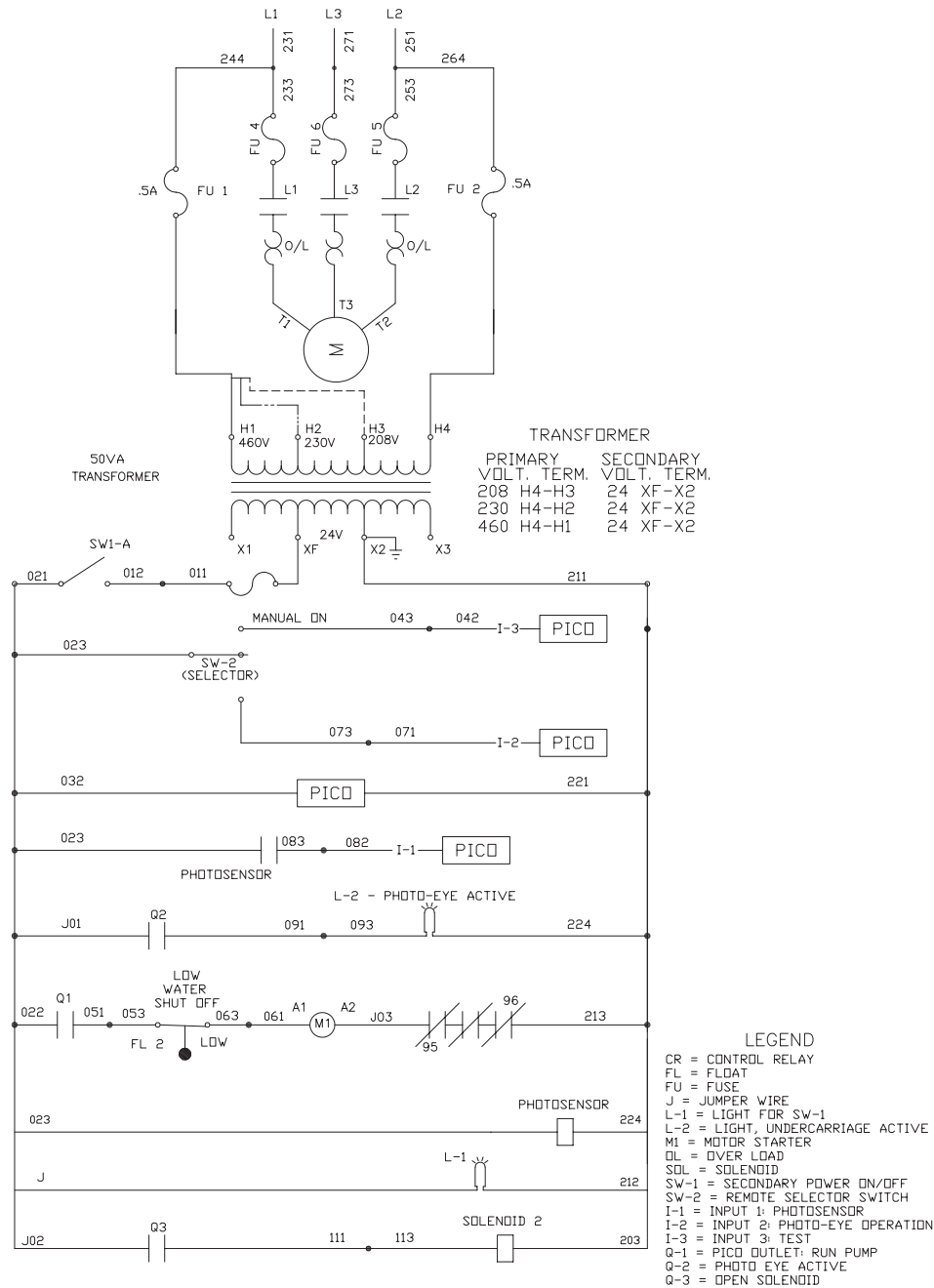
WCU-35-0ME1 1Ø LADDER DIAGRAM 012621 JRC

# WIRING DIAGRAM (208V-230V) (1 PHASE)



WCU-35-0ME1 1Ø WIRING DIAGRAM 012621

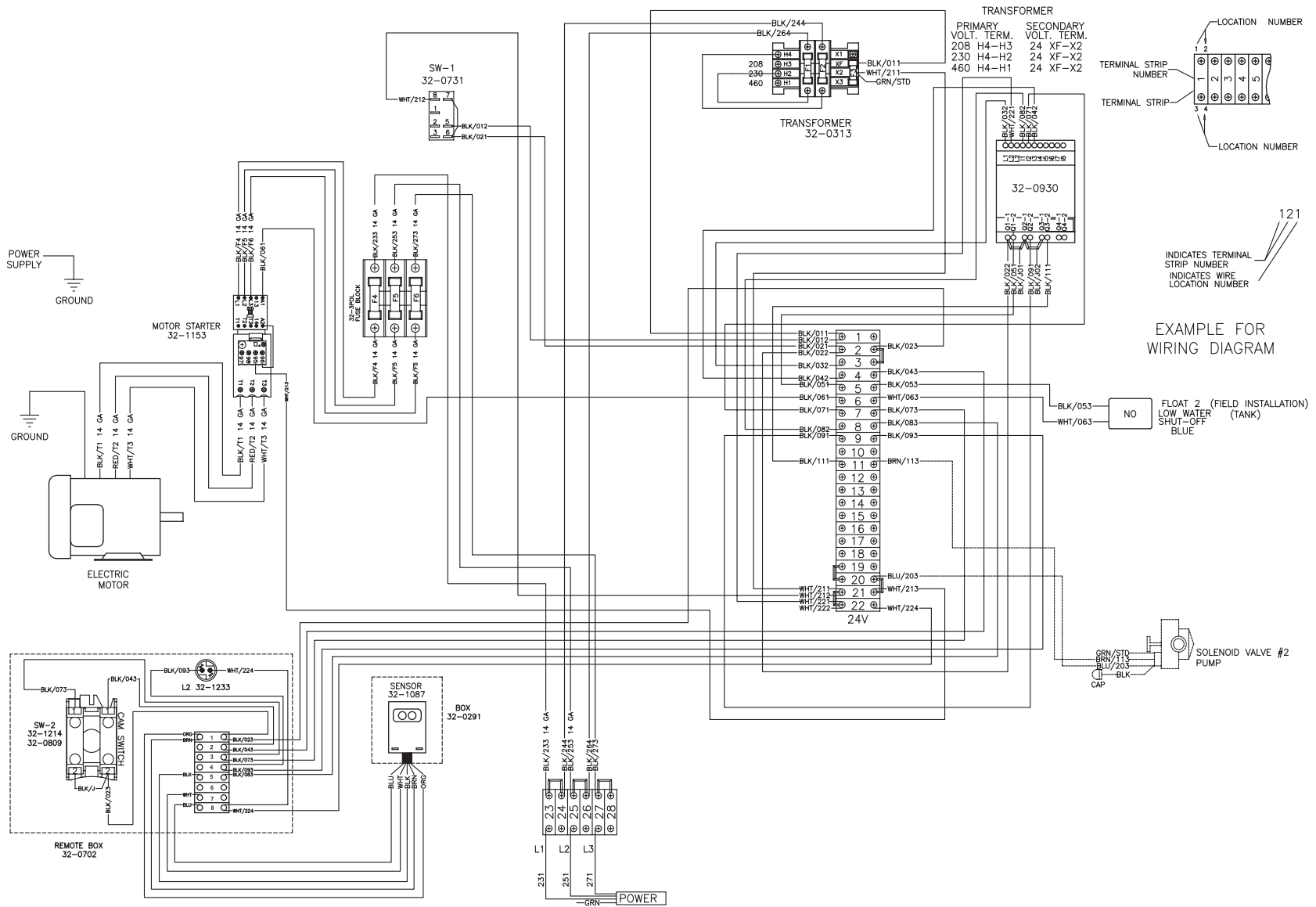
# ELECTRICAL SCHEMATIC (208V-230V/460V) (3 PHASE)



WCU-35-0ME3 3Ø LADDER DIAGRAM 012621 JRC

# WIRING DIAGRAM (208V-230V/460V) (3 PHASE)

WCU-35-0ME3 3Ø WIRING DIAGRAM 012621 JRC



Manufactured by Mi-T-M  
50 MI-T-M Drive, Peosta IA 52068  
563-556-7484/ Fax 563-556-1235